



D I G I T A L S I G N A G E


CILUTIONS
DIGITAL MEDIA BRIDGE



Everything you need for digital signage

Powerful Performance And Reliability

Cilutions DMB Media Player offers superior digital signage software capabilities and exceptional Full HD video quality within solid-state and hard drive set-top box platforms. These players deliver the absolute highest standard of reliability and affordability.

Easy To Use, Sophisticated Features

Full HD 1080p video, Live HDTV, scrolling text and RSS feeds with advanced interactivity options. With Cilutions digital signage software you get powerful results. Skip the digital signage learning curve with Cilutions easy-to-use features and simple screen authoring tool to build multi-zone screen layouts and more. Captivate your audience with dynamic integration and engaging interactive controls.

Signage, All Inclusive

Cilutions DMB Screen Builder application offers an easy way to create and build screen presentations. With a wide range of networking options available for each media player, you can manage your network of digital signage screens no matter where they are located. You can even use Cilutions Hosted Service to remotely update your Internet-based digital signage media players. Cilutions offers the most cost-effective, powerful, digital signage solution available today.

Exceptional Capabilities



Emergency Broadcast Support

Support for designation of an emergency broadcast video stream that, when active, will interrupt each digital signage screen in the network.



Looping Playlist Support

Support for multiple images or videos in a list.



Video and Image Playlists

Permits combining videos and images in playlists for rendering in screen zones.



Zones

Support for multiple content windows displayed on a single screen.



Text Ticker Feed and Subtitles

Support for scrolling text messages.



Usage Tracking Statistics

Audit logs recording player performance.



Playback Scheduling and Day-Parting

Support for controlling screen layouts and playlists by time of day.



Twitter

Support for displaying a real-time twitter feed.



Interactive Digital Signage

Create user interactive screens to move from one digital signage screen to another.



Real Time Weather Display

Graphical and text display zones rendering location based, real-time weather conditions.



Transparent Image Over Video

Support for image files, with a configured transparency level, that can be used to overlay some or all of a video zone - thereby providing unique "branding" (e.g., a customer logo) over a portion of the video at each player location.



Live Video

Support for live video feeds in your digital signage or video-on-demand application.



RSS Feed

Support for scrolling news feeds from an external source.



A140

Media Player

The A140 Media Player set-top box combines high performance with advanced digital signage features, including HLS video streaming capability.

Design full or multi-zoned screens with live streaming video. Display RSS news feeds and scrolling text. Include support for local TV controls (e.g., turn TV on, set volume, etc.), and Time-of-Day (i.e., day-parting) scheduling.

The A140 Media Player operates stand-alone, with no network dependencies, or within a local network or cloud-based environment supporting a wide variety of customer configurations.



amino

Specifications

Size And Weight	140mm x 114mm x 40mm. 320g (excluding accessories and packaging)	Security	Wide selection of DRM and Conditional Access support. HDCP on HDMI. Macrovision on SD outputs (optional), CGMS-A
Inputs	1 x Ethernet 10/100 BaseT via RJ-45 shielded connector	Memory	128MB Flash, 256MB RAM
Outputs	HDMI 1.3a. with HDCP and CEC 10-way Mini-DIN for Composite video, Component (YPrPb), RGB, S-Video and analogue audio. S/PDIF (optical). 2x USB2.0. RS232 serial connector	Front Panel LEDs	Power on /IR command received (Red)
Power	5V DC at 1.5A via external power supply Less than 8W typical usage (external supply input voltage 100-240V AC 50-60Hz 3A max)	Operating Environment	ETS 300-019-1-3 Class 3.1
Codecs	MPEG-2 MP@HL. MPEG-4 pt10 AVC/H.264 HP@L4	EMC Conformance	FCC Part 15 class B. 2004/108/EC EN55022
Video Resolutions	Up to 720p and 1080i.	Safety Approvals	CAN/ CSA-C22.2 No. 60950-1-03. EN60950
Graphics Resolutions	HD graphics up to 1280x720	ROHS	2002-95-EC
Audio	Analogue stereo audio out. Stereo and Dolby 5.1 surround via S-PDIF and HDMI. Dolby Digital+ pass through to external decoder	WEEE	2002-96-EC
		Operating Temperature	0°C (32°F) to 40°C (104°F)
		Storage Humidity	5% to 95% RH (non-condensing)

Accessories

Remote Control	Standard	SCART Cable	Optional
Power Supply & Regional Power Cord	Standard	Component (YPrPb orRGB) Cable (502-419)	Optional
IR Keyboard	Optional	S-VHS & Composite (CVBS) Cable (502-594)	Optional
HDMI Cable	Optional		

A540

Media Player

The A540 Media Player set-top box combines high performance with advanced digital signage features, including HLS video streaming and enhanced PVR capabilities.

Design full or multi-zoned screens with live streaming video or video files. Display RSS news feeds and scrolling text. Include support for local TV controls (e.g., turn TV on, set volume, etc.), and Time-of-Day (i.e., day-parting) scheduling.

With its internal hard drive the A540 Media Player supports both stand-alone and networked operations and comes pre-configured to support robust digital signage storage capacity and live video PVR functionality.



amino

Specifications

Size And Weight	172mm x 180mm x 48mm. 700g (excluding accessories and packaging)	Security	Wide selection of DRM and Conditional Access support. HDCP on HDMI. Macrovision on SD outputs (optional), CGMS-A
Inputs	Ethernet 10/100 BaseT via RJ-45 shielded connector	Memory	128MB Flash, 256MB RAM
Outputs	HDMI 1.3a (excl. Deep colour and DTS audio) with HDCP. 10-way Mini-DIN for Composite video, Component (YPrPb), RGB, S-Video and analogue audio. S/PDIF (optical). USB2.0. RF Modulator	Front Panel LEDs	Dual colour standby (Red) & power on (Green) flashes for IR received command received, record (Red), playback (Green)
Power	5V DC at 3A via external power supply Less than 12W typical usage (external supply input voltage 100-240V AC 50-60Hz, 0.8A max. Output 5V DC 3A)	Operating Environment	ETS 300-019-1-3 Class 3.1
HDD	250GByte	EMC Conformance	FCC Part 15 class B. 2004/108/EC EN55022
Codecs	MPEG-2 MP@HL. MPEG-4 pt10 AVC/H.264 HP@L4	Safety Approvals	CAN/ CSA-C22.2 No. 60950-1-03. EN60950
Video Resolutions	Decodes up to 720p and 1080i.	ROHS	2002-95-EC
Graphics Resolutions	HD graphics up to 1280x720	WEEE	2002-96-EC
Audio	Analogue stereo audio out. Stereo and Dolby 5.1 surround via S-PDIF and HDMI. Dolby Digital+ pass through to external decoder	Operating Temperature	0°C (32°F) to 40°C (104°F)
		Storage Humidity	5% to 95% RH (non-condensing)

Accessories

Remote Control (510-710)	Standard	SCART Cable (502-418)	Optional
Power Supply & Regional Power Cord	Standard	Component (YPrPb orRGB) Cable (502-419)	Optional
IR Keyboard (502-455)	Optional	S-VHS & Composite (CVBS) Cable (502-594)	Optional
HDMI Cable (510-885)	Optional		

AvediaPlayer Receiver

Add digital signage to an Exterity AvediaPlayer Receiver. Whether you plan to upgrade an Exterity IPTV network with digital signage capabilities or use the Exterity AvediaPlayer Receiver as a stand-alone digital signage appliance, Cilutions embedded software application offers a complete, feature-rich solution.

Design full or multi-zoned screens with live streaming video or video files. Display RSS news feeds and scrolling text. Include support for image playlists, and Time-of-Day (i.e., day-parting) scheduling.

Cilutions digital signage software enhances the Exterity AvediaPlayer Receiver supporting automatic playback of digital signage messaging using assets either delivered separately and stored locally or retrieved automatically in a cloud-based network configuration.

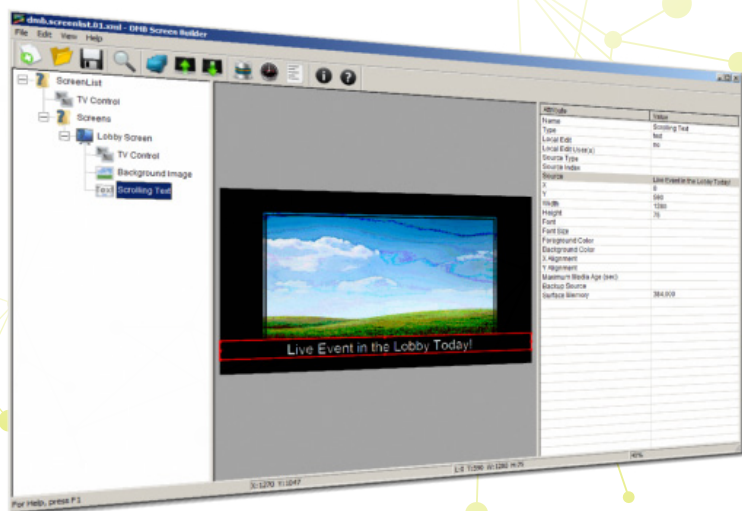


AvediaPlayer r9210 Specifications

Video Output	HDMI* (with HDCP): 1080p,1080i,720p (50Hz/60Hz), 576p (50Hz), 480p (60Hz) Component (YPbPr, 3 x RCA): 1080i,720p (50Hz/60Hz), 576p,576i (50Hz), 480p,480i (60Hz) S-Video (Y/C, mini-DIN): PAL 576i (50Hz) Composite (CVBS, RCA): PAL 576i (50Hz)5V DC at	USB Port	Can be used for third party applications, external storage, keyboard, mouse or touch screen* USB Hotplug enables USB devices to be auto mounted
Audio Output	HDMI: 2 Channel PCM or Bitstream Analogue (2 x RCA): Unbalanced stereo (line level 1V pk-pk) TOS: 2 Channel PCM or BitstreamMPEG-2 MP@HL	Physical Dimensions	W: 222mm x D: 95mm x H: 43mm Weight: 0.6 kg
Video Decoding	H.264 (MPEG 4 part 10-ISO/IEC 14496-2) MPEG 2 (ISO/IEC 13818-2) Resolutions: up to SD, 720p & 1080i @ 50Hz, 59.94Hz or 60Hz 1080p @ 24Hz	Environment	Operating temperature: 0 ...+40°C/+32...+122°F Storage temperature: -20 ...+70°C/-4...+158°F Operating Relative Humidity: 5 – 95% (non-condensing)
Audio Decoding	MPEG 1 Layer II (ISO/IEC 11172-3) AC3/EAC3 AAC/HE-AAC Downmix multi channel audio to stereo	System	CPU: ST40-300 450MHz RAM: 256MB Flash: 32MB (for firmware and configuration) OS: Linux 2.6.xx Optional internal storage up to 64GB
Streaming	MPEG 2 Transport Stream (ISO/IEC 13818-1) RTP UDP IP multicast IP unicast IGMPv2/v3 Video On-Demand: RTSP, HTTP	Network	Linux IPv4 stack DHCP or Static IP addressing IEEE 802.3u 10/100Mbps MDIX Ethernet IEEE 802.3af PD
		Power	DC Jack (24V): 7W Typical, 11W Maximum POE IEEE 802.3af PD (48V): 7W Typical, 11W Maximum

DMB Screen Builder

The DMB Screen Builder is a Windows application which lets a user graphically create and publish sets of digital signage and digital menu board screens. Using DMB Screen Builder a user can build, preview and distribute multiple channels of digital signage screens.



DMB Screen Builder Features

- ✓ Easily identify the digital signage media players in your network
- ✓ Build looping playlists with drag and drop functionality
- ✓ Create graphically rich Video-on-Demand interactive screens
- ✓ Build Touch Screen menus
- ✓ Design Digital Menu Board screens
- ✓ Add Live Video streaming
- ✓ Include local TV Controls (e.g., Turn TV on, set volume, etc.)



Exterity IPTV Network Integration

Exterity has been delivering enterprise class IPTV solutions since 2001, and today its products are used in 40 countries by thousands of customers, including some of the world's largest corporations.



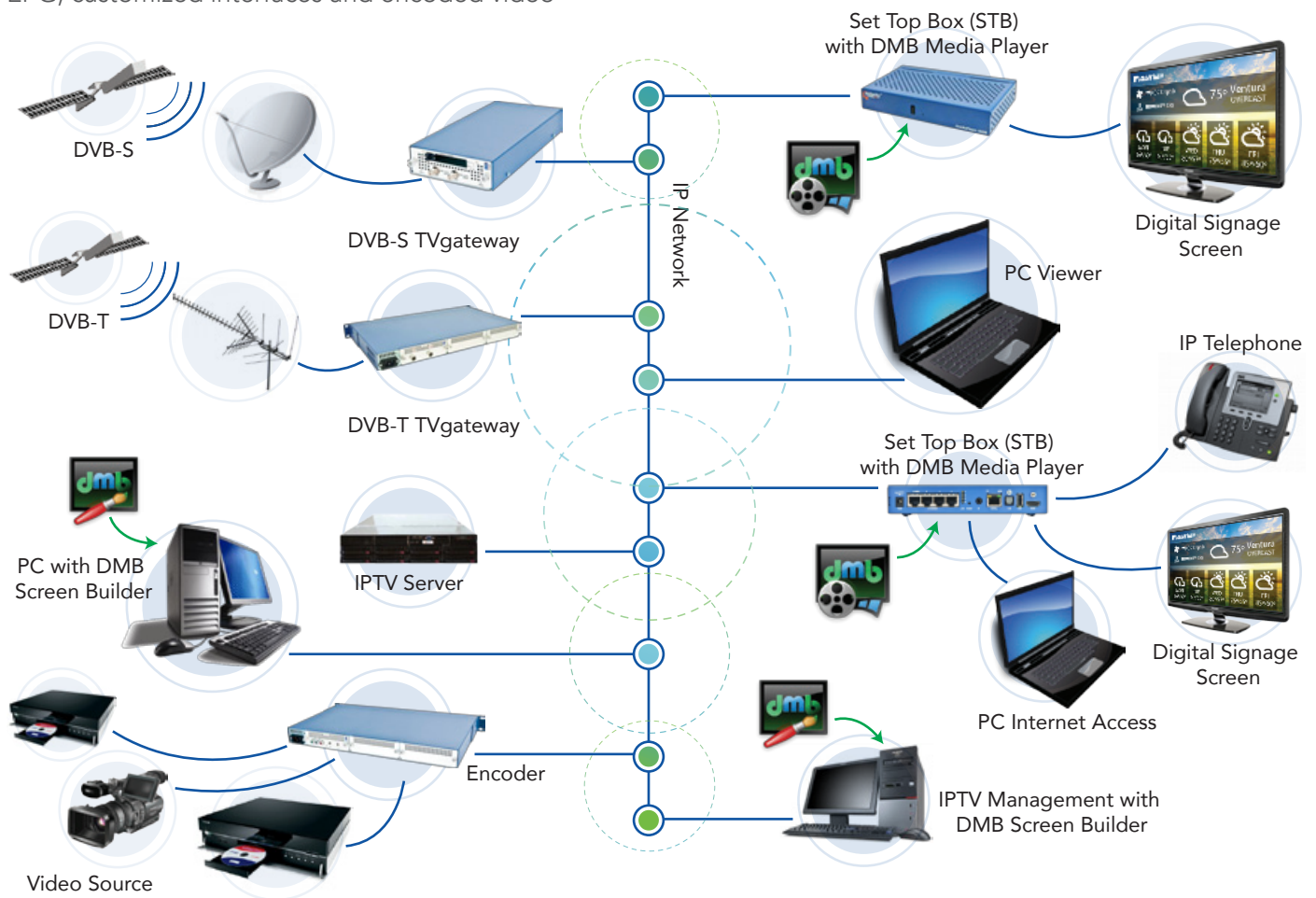
Cilutions digital signage software can be enabled on any AvediaPlayer Receiver to add powerful digital signage capabilities to an Exterity network.

The following diagram illustrates an Exterity IPTV network with Cilutions digital signage software.

Head End Equipment

Providing access to TV channels, streaming VOD, EPG, customized interfaces and encoded video

User End



Media Player

Comparison Table

	A140 Media Player	A540 Media Player	r9200 Receiver	r9210 Receiver	r9220 Receiver
Networked Player	•	•	•	•	•
Media Formats					
Videos					
Standard Definition	•	•	•	•	•
High Definition	•	•	•	•	•
MPEG-2	•	•	•	•	•
MPEG-4 AVC/H.264	•	•	•	•	•
Images					
High Definition	•	•	•	•	•
BMP	•	•	•	•	•
JPEG	•	•	•	•	•
PNG	•	•	•	•	•
GIF	•	•	•	•	•
TIFF	•	•	•	•	•
Audio					
AC3	•	•	•	•	•
AAC	•	•	•	•	•
Display Resolutions					
1080p			•	•	•
1080i	•	•	•	•	•
720p	•	•	•	•	•
480i	•	•	•	•	•
Native Connectors					
HDMI	•	•	•	•	•
Composite	•	•		•	
Component	•	•		•	
S-Video	•	•		•	
Ethernet 10/100	•	•	•	•	•
Four Port Switch					•
RF Cable Connection	•	•			
PoE (Power-over-Ethernet)			•	•	•
Wireless Support	•	•			
Status LEDs	•	•			
Storage					
Internal Storage		•		•	
External USB	•	•	•	•	•

	A140 Media Player	A540 Media Player	r9200 Receiver	r9210 Receiver	r9220 Receiver
Set-Top-Box Enclosure					
Steel			•	•	•
Features					
Interactivity (IR remote)	•	•	•	•	•
Looping Playlists	•	•	•	•	•
Multiple Zones on a Screen	•	•	•	•	•
RSS Ticker Feed	•	•	•	•	•
Video Subtitles Support			•	•	•
Twitter Feed	•	•	•	•	•
Extensive Logging	•	•	•	•	•
Scheduling and Day-Parting	•	•	•	•	•
HTML Browser Zones	•	•			
HTML5 Support	•	•			
Menu Boards	•	•	•	•	•
PVR On-Demand Recording		•			
VOD Playback	•	•	•	•	•
Video Trick Play Support		•			
Way-Finding	•	•	•	•	•
Weather Reports	•	•	•	•	•
Image and Text Overlays	•	•	•	•	•
Live Video Zones	•	•	•	•	•
Stored Video Zones	•	•	•	•	•
Multicast Relay		•			
Emergency Announcements	•	•	•	•	•
Multi-language Support	•	•	•	•	•
Real-time API	•	•	•	•	•
DMB Screen Builder					
Application for Graphically Building Screens	•	•	•	•	•
Screen Preview	•	•	•	•	•
Set-Top-Box Finder	•	•	•	•	•
Content Update					
Networked	•	•	•	•	•
Stand-alone	•	•	•	•	•
Pull from a Cloud Server	•	•	•	•	•
Multicast File Reception		•			
Push from a Screen Builder	•	•	•	•	•
Local Web Browser Upload	•	•	•	•	•
Management					
SNMP Manageable	•	•	•	•	•
Web Browser User Interface	•	•	•	•	•
SSH/Telnet Remote Login	•	•	•	•	•
Field Upgradeable	•	•			



"Cilutions media players
are some of the **best, low-cost**
and **feature rich** digital
signage players available in the
set-top box market today."

- Robert Orndorff, Executive Vice President,
The Automotive Broadcasting Network



6 Montgomery Village Ave., Suite 420, Gaithersburg, MD 20879
www.cilutions.com | 877-515-4004 | sales@cilutions.com