



D I G I T A L   S I G N A G E

  
**CILUTIONS**  
DIGITAL MEDIA BRIDGE



# Everything you need for digital signage

## **Powerful Performance And Reliability**

Cilutions DMB Media Player offers superior digital signage software capabilities and exceptional Full HD video quality within solid-state and hard drive set-top box platforms. These players deliver the absolute highest standard of reliability and affordability.

## **Easy To Use, Sophisticated Features**

Full HD 1080p video, Live HDTV, scrolling text and RSS feeds with advanced interactivity options. With Cilutions digital signage software you get powerful results. Skip the digital signage learning curve with Cilutions easy-to-use features and simple screen authoring tool to build multi-zone screen layouts and more. Captivate your audience with dynamic integration and engaging interactive controls.

## **Signage, All Inclusive**

Cilutions DMB Screen Builder application offers an easy way to create and build screen presentations. With a wide range of networking options available for each media player, you can manage your network of digital signage screens no matter where they are located. You can even use Cilutions Hosted Service to remotely update your Internet-based digital signage media players. Cilutions offers the most cost-effective, powerful, digital signage solution available today.

# Exceptional Capabilities



## Emergency Broadcast Support

Support for designation of an emergency broadcast video stream that, when active, will interrupt each digital signage screen in the network.



## Looping Playlist Support

Support for multiple images or videos in a list.



## Video and Image Playlists

Permits combining videos and images in playlists for rendering in screen zones.



## Zones

Support for multiple content windows displayed on a single screen.



## Text Ticker Feed and Subtitles

Support for scrolling text messages.



## Usage Tracking Statistics

Audit logs recording player performance.



## Playback Scheduling and Day-Parting

Support for controlling screen layouts and playlists by time of day.



## Twitter

Support for displaying a real-time twitter feed.



## Interactive Digital Signage

Create user interactive screens to move from one digital signage screen to another.



## Real Time Weather Display

Graphical and text display zones rendering location based, real-time weather conditions.



## Transparent Image Over Video

Support for image files, with a configured transparency level, that can be used to overlay some or all of a video zone - thereby providing unique "branding" (e.g., a customer logo) over a portion of the video at each player location.



## Live Video

Support for live video feeds in your digital signage or video-on-demand application.



## RSS Feed

Support for scrolling news feeds from an external source.



# A140

## Media Player

The A140 Media Player set-top box combines high performance with advanced digital signage features, including HLS video streaming capability.

Design full or multi-zoned screens with live streaming video. Display RSS news feeds and scrolling text. Include support for local TV controls (e.g., turn TV on, set volume, etc.), and Time-of-Day (i.e., day-parting) scheduling.

The A140 Media Player operates stand-alone, with no network dependencies, or within a local network or cloud-based environment supporting a wide variety of customer configurations.



### Specifications

<b>Size And Weight</b>	140mm x 114mm x 40mm. 320g (excluding accessories and packaging)	<b>Security</b>	Wide selection of DRM and Conditional Access support. HDCP on HDMI. Macrovision on SD outputs (optional), CGMS-A
<b>Inputs</b>	1 x Ethernet 10/100 BaseT via RJ-45 shielded connector	<b>Memory</b>	128MB Flash, 256MB RAM
<b>Outputs</b>	HDMI 1.3a. with HDCP and CEC 10-way Mini-DIN for Composite video, Component (YPrPb), RGB, S-Video and analogue audio. S/PDIF (optical). 2x USB2.0. RS232 serial connector	<b>Front Panel LEDs</b>	Power on /IR command received (Red)
<b>Power</b>	5V DC at 1.5A via external power supply Less than 8W typical usage (external supply input voltage 100-240V AC 50-60Hz 3A max)	<b>Operating Environment</b>	ETS 300-019-1-3 Class 3.1
<b>Codecs</b>	MPEG-2 MP@HL. MPEG-4 pt10 AVC/H.264 HP@L4	<b>EMC Conformance</b>	FCC Part 15 class B. 2004/108/EC EN55022
<b>Video Resolutions</b>	Up to 720p and 1080i.	<b>Safety Approvals</b>	CAN/ CSA-C22.2 No. 60950-1-03. EN60950
<b>Graphics Resolutions</b>	HD graphics up to 1280x720	<b>ROHS</b>	2002-95-EC
<b>Audio</b>	Analogue stereo audio out. Stereo and Dolby 5.1 surround via S-PDIF and HDMI. Dolby Digital+ pass through to external decoder	<b>WEEE</b>	2002-96-EC
		<b>Operating Temperature</b>	0°C (32°F) to 40°C (104°F)
		<b>Storage Humidity</b>	5% to 95% RH (non-condensing)

### Accessories

Remote Control	Standard	SCART Cable	Optional
Power Supply & Regional Power Cord	Standard	Component (YPrPb orRGB) Cable (502-419)	Optional
IR Keyboard	Optional	S-VHS & Composite (CVBS) Cable (502-594)	Optional
HDMI Cable	Optional		

# A540

## Media Player

The A540 Media Player set-top box combines high performance with advanced digital signage features, including HLS video streaming and enhanced PVR capabilities.

Design full or multi-zoned screens with live streaming video or video files. Display RSS news feeds and scrolling text. Include support for local TV controls (e.g., turn TV on, set volume, etc.), and Time-of-Day (i.e., day-parting) scheduling.

With its internal hard drive the A540 Media Player supports both stand-alone and networked operations and comes pre-configured to support robust digital signage storage capacity and live video PVR functionality.



**amino**

### Specifications

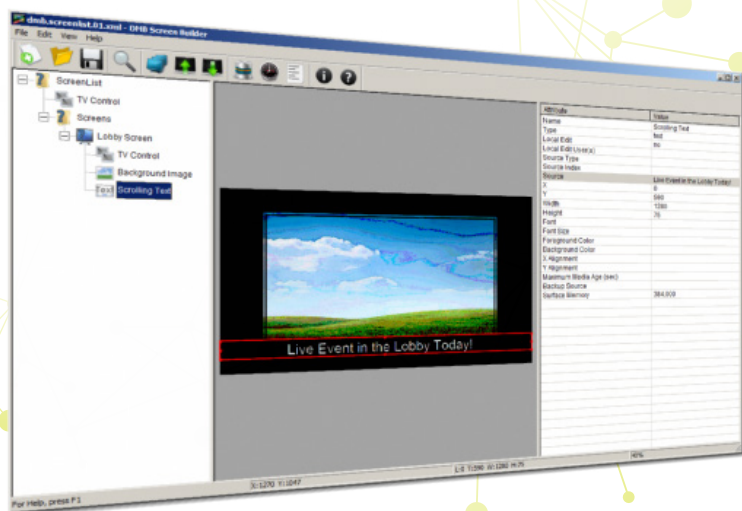
<b>Size And Weight</b>	172mm x 180mm x 48mm. 700g (excluding accessories and packaging)	<b>Security</b>	Wide selection of DRM and Conditional Access support. HDCP on HDMI. Macrovision on SD outputs (optional), CGMS-A
<b>Inputs</b>	Ethernet 10/100 BaseT via RJ-45 shielded connector	<b>Memory</b>	128MB Flash, 256MB RAM
<b>Outputs</b>	HDMI 1.3a (excl. Deep colour and DTS audio) with HDCP. 10-way Mini-DIN for Composite video, Component (YPrPb), RGB, S-Video and analogue audio. S/PDIF (optical). USB2.0. RF Modulator	<b>Front Panel LEDs</b>	Dual colour standby (Red) & power on (Green) flashes for IR received command received, record (Red), playback (Green)
<b>Power</b>	5V DC at 3A via external power supply Less than 12W typical usage (external supply input voltage 100-240V AC 50-60Hz, 0.8A max. Output 5V DC 3A)	<b>Operating Environment</b>	ETS 300-019-1-3 Class 3.1
<b>HDD</b>	250GByte	<b>EMC Conformance</b>	FCC Part 15 class B. 2004/108/EC EN55022
<b>Codecs</b>	MPEG-2 MP@HL. MPEG-4 pt10 AVC/H.264 HP@L4	<b>Safety Approvals</b>	CAN/ CSA-C22.2 No. 60950-1-03. EN60950
<b>Video Resolutions</b>	Decodes up to 720p and 1080i.	<b>ROHS</b>	2002-95-EC
<b>Graphics Resolutions</b>	HD graphics up to 1280x720	<b>WEEE</b>	2002-96-EC
<b>Audio</b>	Analogue stereo audio out. Stereo and Dolby 5.1 surround via S-PDIF and HDMI. Dolby Digital+ pass through to external decoder	<b>Operating Temperature</b>	0°C (32°F) to 40°C (104°F)
		<b>Storage Humidity</b>	5% to 95% RH (non-condensing)

### Accessories

Remote Control (510-710)	Standard	SCART Cable (502-418)	Optional
Power Supply & Regional Power Cord	Standard	Component (YPrPb orRGB) Cable (502-419)	Optional
IR Keyboard (502-455)	Optional	S-VHS & Composite (CVBS) Cable (502-594)	Optional
HDMI Cable (510-885)	Optional		

# DMB Screen Builder

The DMB Screen Builder is a Windows application which lets a user graphically create and publish sets of digital signage and digital menu board screens. Using DMB Screen Builder a user can build, preview and distribute multiple channels of digital signage screens.



## DMB Screen Builder Features

- ✓ Easily identify the digital signage media players in your network
- ✓ Build looping playlists with drag and drop functionality
- ✓ Create graphically rich Video-on-Demand interactive screens
- ✓ Build Touch Screen menus
- ✓ Design Digital Menu Board screens
- ✓ Add Live Video streaming
- ✓ Include local TV Controls (e.g., Turn TV on, set volume, etc.)



# Media Player

## Comparison Table

	A140 Media Player	A540 Media Player
Networked Player	•	•
<b>Media Formats</b>		
<b>Videos</b>		
Standard Definition	•	•
High Definition	•	•
MPEG-2	•	•
MPEG-4 AVC/H.264	•	•
<b>Images</b>		
High Definition	•	•
BMP	•	•
JPEG	•	•
PNG	•	•
GIF	•	•
TIFF	•	•
<b>Audio</b>		
AC3	•	•
AAC	•	•
<b>Display Resolutions</b>		
1080i	•	•
720p	•	•
480i	•	•
<b>Native Connectors</b>		
HDMI	•	•
Composite	•	•
Component	•	•
S-Video	•	•
Ethernet 10/100	•	•
RF Cable Connection	•	•
Wireless Support	•	•
Status LEDs	•	•
<b>Storage</b>		
Internal Storage		•
External USB	•	•

	A140 Media Player	A540 Media Player
--	-------------------	-------------------

Features		
----------	--	--

Interactivity (IR remote)	•	•
Looping Playlists	•	•
Multiple Zones on a Screen	•	•
RSS Ticker Feed	•	•
Twitter Feed	•	•
Extensive Logging	•	•
Scheduling and Day-Parting	•	•
HTML Browser Zones	•	•
HTML5 Support	•	•
Menu Boards	•	•
PVR On-Demand Recording		•
VOD Playback	•	•
Video Trick Play Support		•
Way-Finding	•	•
Weather Reports	•	•
Image and Text Overlays	•	•
Live Video Zones	•	•
Stored Video Zones	•	•
Multicast Relay		•
Emergency Announcements	•	•
Multi-language Support	•	•
Real-time API	•	•

DMB Screen Builder		
--------------------	--	--

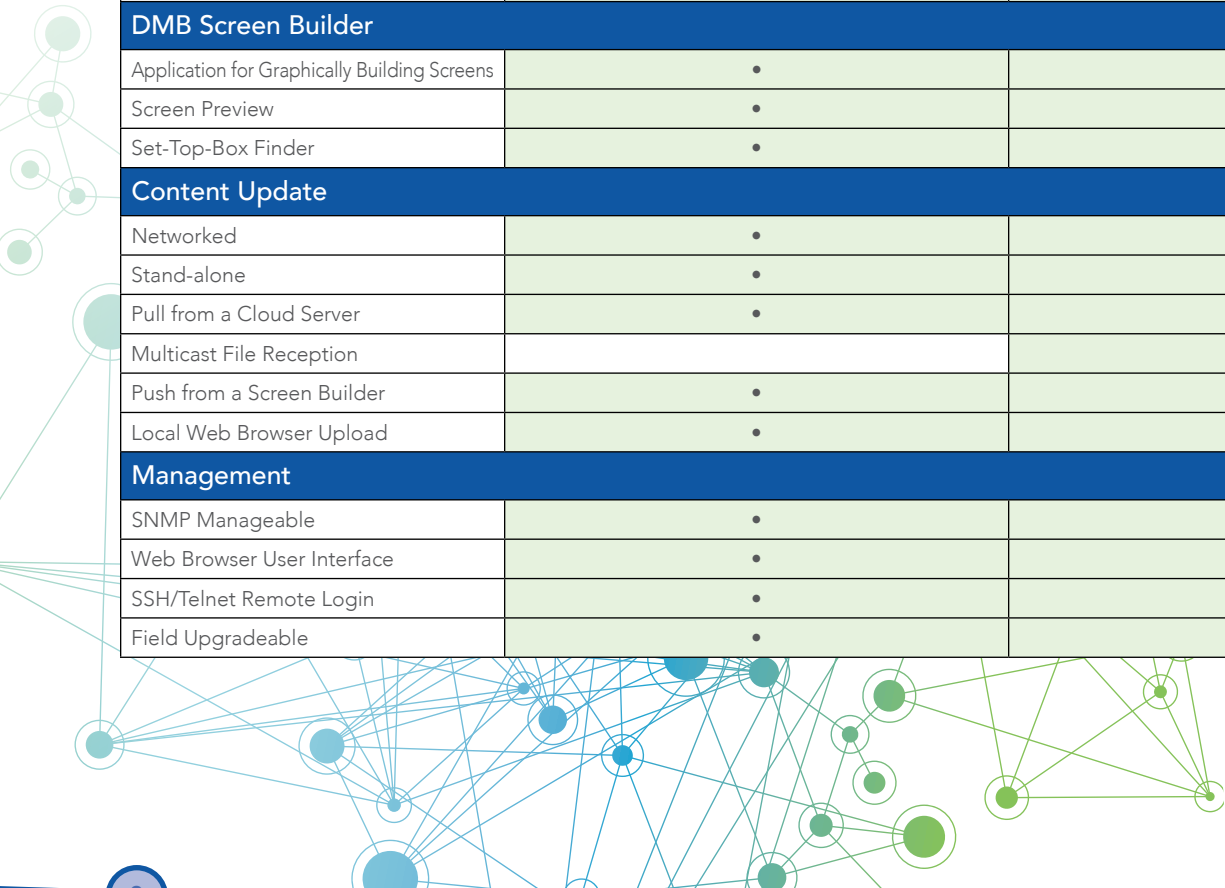
Application for Graphically Building Screens	•	•
Screen Preview	•	•
Set-Top-Box Finder	•	•

Content Update		
----------------	--	--

Networked	•	•
Stand-alone	•	•
Pull from a Cloud Server	•	•
Multicast File Reception		•
Push from a Screen Builder	•	•
Local Web Browser Upload	•	•

Management		
------------	--	--

SNMP Manageable	•	•
Web Browser User Interface	•	•
SSH/Telnet Remote Login	•	•
Field Upgradeable	•	•





"Cilutions media players  
are some of the **best, low-cost**  
and **feature rich** digital  
**signage players** available in the  
set-top box market today."

- Robert Orndorff, Executive Vice President,  
The Automotive Broadcasting Network



6 Montgomery Village Ave., Suite 420, Gaithersburg, MD 20879  
www.cilutions.com | 877-515-4004 | sales@cilutions.com